



LightHouse Social Service Centers

Serving the Reentry Community
Through Housing & Employment

LightHouse Social Service Centers



LightHouse Social Service Centers, a 501 (c) 3 public-benefit corporation provides housing support services to individuals and families who are unhoused or at significant risk of becoming unhoused end their housing crisis and transition to or remain in permanent housing. In both Riverside and San Bernardino Counties, LightHouse utilizes “Housing First” principles to assist participants with accessing, acquiring and maintaining permanent housing.

Housing First

Housing First is a homeless assistance approach that prioritizes providing permanent housing and works to quickly connect individuals and families experiencing homelessness to permanent housing without preconditions and barriers to entry, such as sobriety, treatment or service participation requirements. Supportive services are offered to maximize housing stability and prevent returns to homelessness as opposed to addressing predetermined treatment goals prior to permanent housing entry.

Who do we Serve.....

The populations served include individuals, families, veterans, older adults, formerly justice-involved individuals (re-entry population), persons living with disabilities, persons fleeing domestic violence and individuals living with a serious or chronic health condition. LightHouse provides transitional living services, rapid re-housing services and permanent supportive housing services. LightHouse also provides mental health and employment services as well as other wraparound assistance.

The LightHouse Adult Reentry Program provides Rapid Rehousing Services



What is Rapid Re-Housing (RRH)

The Rapid Re-Housing model moves homeless individuals into permanent housing as quickly as possible and provides supportive services to assist those individuals in achieving and maintaining housing stability.

The program provides tenant-based rental assistance to individuals within a specific time-period in scattered-site housing in San Bernardino and Riverside Counties.

Rapid Re-Housing services are provided utilizing a “Housing First”.



Rapid Re-Housing (RRH) **ends homelessness** for families and individuals.

FIND LANDLORDS
& APARTMENTS

HELP PAY
FOR HOUSING

CONNECT
TO JOBS & SERVICES

Today we will focus on services to individuals who are formerly justice-involved: Referral Process

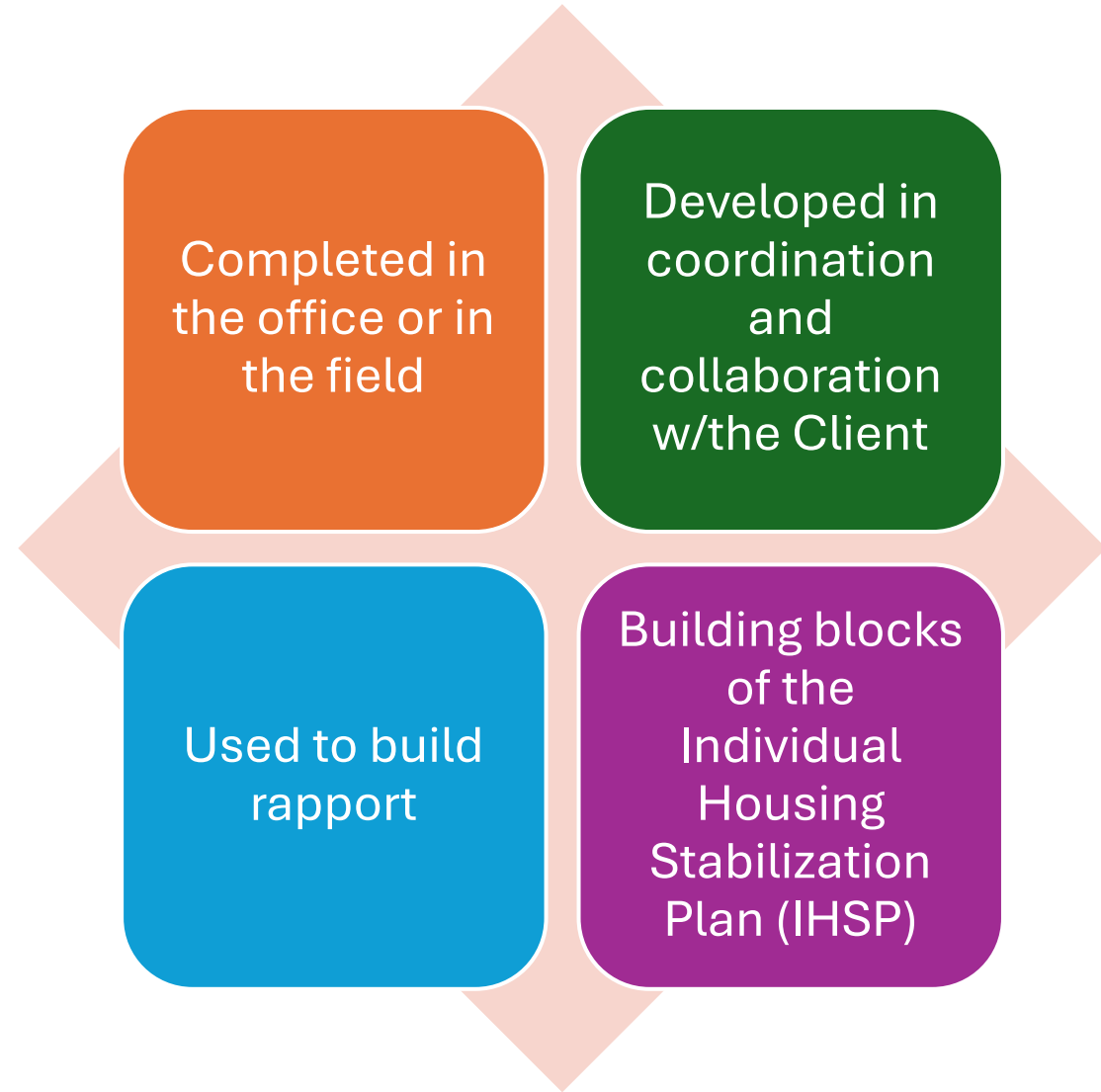
PAROLE AND
PROBATION

SELF
REFERRALS

COORDINATED
ENTRY SYSTEM

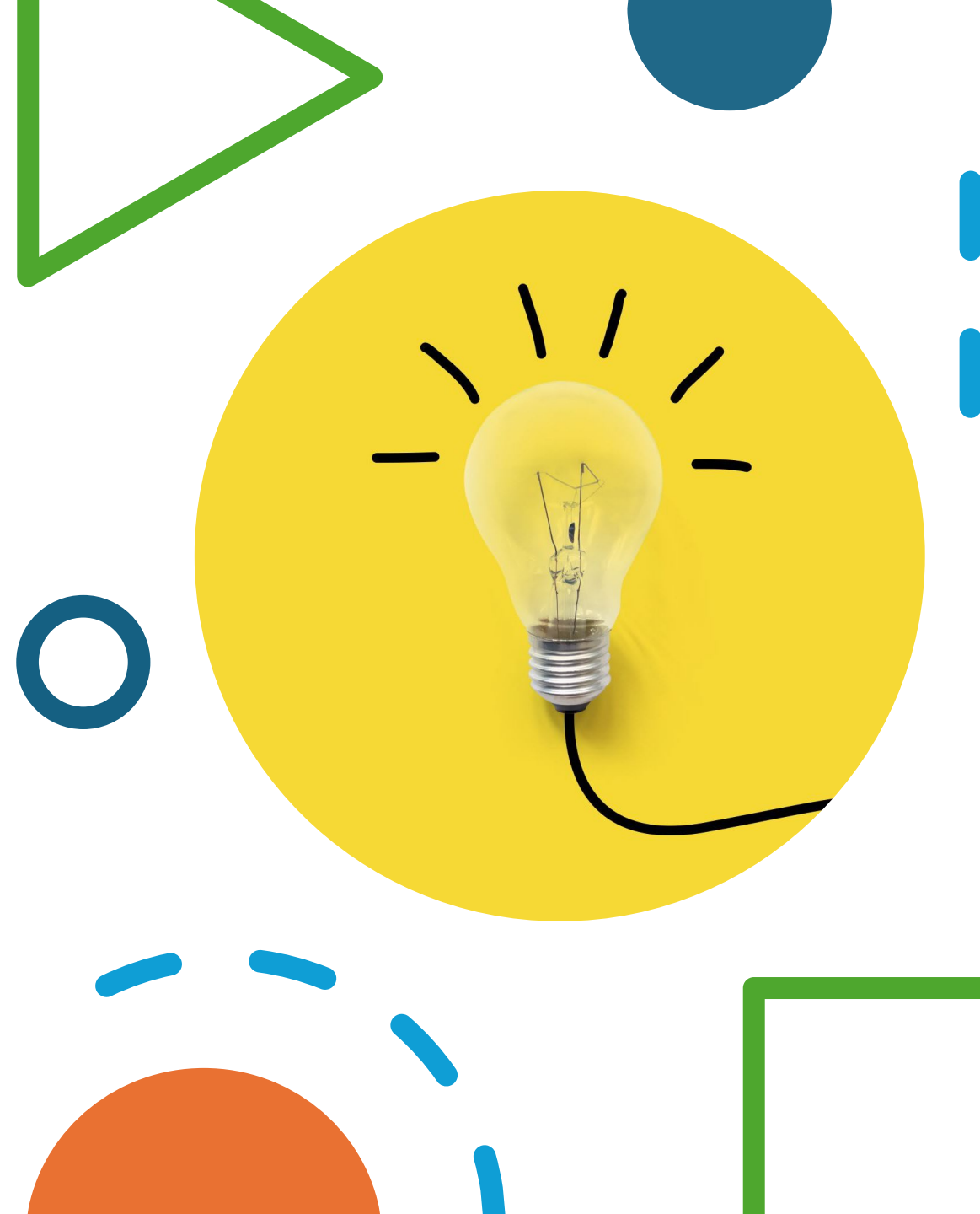
IN-REACH

Phone/In-
person
Assessment,
Intake
Assessment,
Case
Management
Needs
Assessment



Individual Housing Stabilization Plan

- Identifies strengths and challenges
- The level of supportive services needed to assist in maintaining housing stability
- Goal development – including plans for completing requirements (classes, meeting with agents, testing, etc.)
- Outlines activities and milestones needed to meet financial obligations
- Fluid document-updated at least quarterly
- Timeline for accessing and connecting to benefits and resources including employment services





Housing Navigation Services

LightHouse utilizes housing navigation services to locate and apply for appropriate permanent housing options. LightHouse Navigators work with participants with limited or no income, negative credit histories and tenuous rental history. Housing Navigators conduct landlord/property management interviews and act as liaisons between the client and landlords. They also advocate on behalf of the client and explain the program services and requirements. LightHouse has developed a Good Neighbor Workshop for clients and a Landlord Workshop. Each client also receives a portfolio designed to his/her specific housing needs with all information needed to be successful in housing.



Housing- focused Case Management Services

- Housing goals are short term, achievable, client-driven and strength-based.
- The Case Manager will conduct home-based visits, at a minimum of one time per month.
- More frequent visits may be needed, especially during the housing stabilization period, which generally last anywhere from 3-6 months.
- The Case Manager should meet with the with the Participant in the home once housed to assess housing stability
- Program Participants will be assessed for all needed resources and services such as health, mental health services, and substance abuse services
- Case management staff will also assist with tenant counseling and landlord mediation and work with the Participants to mitigate any housing barriers or issues that might be used to screen them out of housing.
- Case Management services are home-based; program staff meets participants "where they are", at an encampment, library, car, park etc. or in the Participants home.
- LHSSC also provides services through Progressive Engagement, meaning services are based on the needs of the family, and provide the "right amount of service, at the right time", therefore maximizing the number of Participants that can be served.



Temporary Financial Assistance

01

Payment of
Security
Deposits

02

Utility
Deposits

03

Rental
Assistance

04

Purchase Beds
and
Refrigerators

05

Lodging
Kits/Housing
Start-up Items



Program Eligibility



Eligibility

- Services for recently released individuals from incarceration within first 12 months actively on Parole or Probation in San Bernardino or Riverside Counties. Individuals can also be a PC290, PC288 or an Arsonist resistant.
- No income criteria
- Be able to live in dependably
- Homeless or at risk of being homeless

Helping Justice Involved Reenter Employment (HIRE Program)

Overview: The HIRE program, spearheaded by the San Bernardino County Workforce Development Board, is dedicated to supporting individuals with justice system involvement as they transition back into the workforce. This initiative is part of a broader effort to foster successful reintegration and reduce recidivism by providing tailored employment services and support.

- **Objectives:**

- Reentry Support: Facilitate a smoother transition for individuals reentering the community from incarceration or justice system involvement.
- Employment Opportunities: Increase access to job opportunities for justice-involved individuals, helping them build stable, productive careers.
- Recidivism Reduction: Contribute to lower recidivism rates by addressing one of the key factors in successful reentry—stable employment.

Services Offered:

- Comprehensive Assessment- Career Interest Profile
- Employment Navigation: Job development, employer engagement, and on-the-job support
- **Job Readiness Training:** Provides essential skills and knowledge needed for the job market, including resume building, interview preparation, and job search strategies.
- **Employment Case Management:** Individualized support services to assist participants in the identification and pursuit of suitable employment paths. This includes the development of an Individual Employment Service Plan (IESP).
- **Skills Development:** Includes access to vocational training and certifications to enhance job prospects and employability.
- Assistance with the development of educational goals if appropriate.

Employment Placement:



Job Matching: Assists participants in finding job opportunities that match their skills and interests.



Employer Partnerships: Collaborates with local businesses to create job opportunities and facilitate hiring of clients.

Community Resources and Training:

- Pre-Apprenticeships: Connects eligible clients with local Union career pathways to promote opportunities for entry into Journeyman Apprenticeships in various professions including construction, electricians, commercial sheet metal workers, and so many more
- Workforce Development OJT (On-the job training) and WIOA Enrollment: Partners with WFD to connect clients with enrollment for WIOA funding as well as opportunities for OJT to better support the clients in determining their preferred career path
- San Bernardino College Districts: Connects clients to vocational based cohort programs that include Phlebotomy, Construction, CalTrans, and various career fields

Eligibility

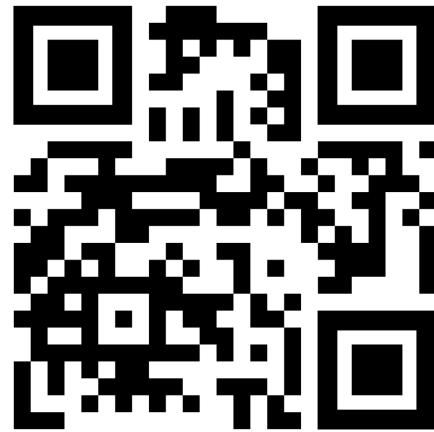
- Individuals with justice system involvement who are residents of San Bernardino County and are seeking employment. Justice involved can include those who have records on the county, state, or federal level
- Participants must be motivated to reintegrate into the workforce and demonstrate a commitment to making positive life changes.
- By supporting justice-involved individuals, the HIRE program aims to enhance community safety, improve economic stability, and foster successful reintegration into society





Questions

Thank you



Tania Johnson, Deputy Director

TaniaJ@LightHouse-ssc.org

(90) 953-5970

Darold Morris, Employment Program
Manager

DaroldM@LightHouse-ssc.org

(951) 954-2608

